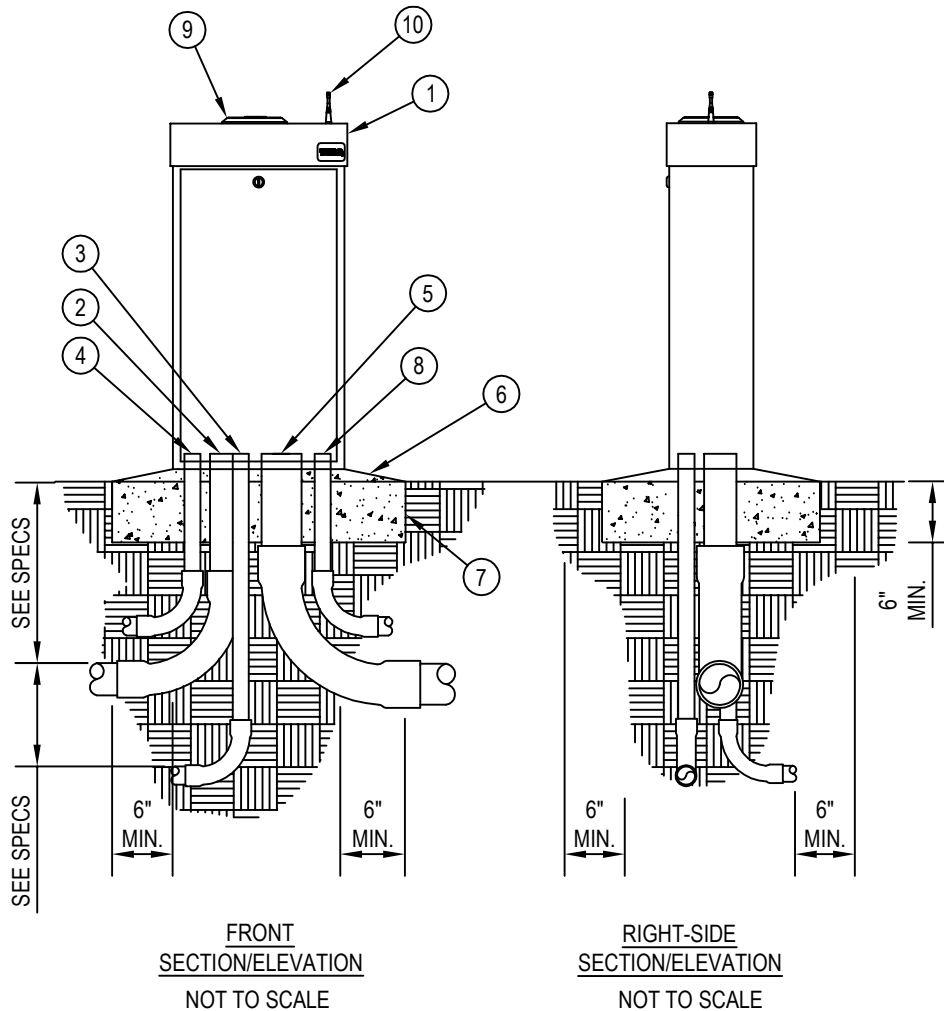




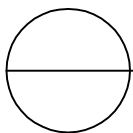
TORO-IRRIGATION DIVISION  
5825 JASMINE STREET  
RIVERSIDE, CA 92504  
TOLL FREE: 1-877-345-8676  
FAX: (951) 359-1870  
[www.toro.com](http://www.toro.com)



- ① TORO SENTINEL TOP ENTRY IRRIGATION CONTROLLER  
MODEL NO. SBDPS1U (DC) OR  
SBAPS1U (AC)  
SEE PLAN FOR NUMBER OF STATIONS
- ② 2" CONDUIT FOR TWO-WIRE PATH.
- ③ 3/4" CONDUIT FOR GROUND
- ④ 3/4" CONDUIT FOR INPUT POWER PER  
LOCAL & NATIONAL ELECTRICAL CODES
- ⑤ OPTIONAL 2" CONDUIT FOR SECOND  
TWO-WIRE PATH.
- ⑥ FINISHED SURFACE SLOPE TO DRAIN
- ⑦ CONCRETE FOOTING
- ⑧ 1/2" CONDUIT FOR SENSOR WIRES
- ⑨ STANDARD 400MHZ ANTENNA FOR  
PRIMARY COMMUNICATION.
- ⑩ 900MHZ ANTENNA FOR OPTIONAL  
WIRELESS SOIL SENSOR ADD-ON  
MODEL NO. TPS-RX

**NOTES:**

1. INSTALLATION TO BE COMPLETED IN ACCORDANCE WITH MANUFACTURER'S SPECIFICATIONS.
2. DO NOT SCALE DRAWING.
3. THIS DRAWING IS INTENDED FOR USE BY ARCHITECTS, ENGINEERS, CONTRACTORS, CONSULTANTS AND DESIGN PROFESSIONALS FOR PLANNING PURPOSES ONLY. THIS DRAWING MAY NOT BE USED FOR CONSTRUCTION.
4. ALL INFORMATION CONTAINED HEREIN WAS CURRENT AT THE TIME OF DEVELOPMENT BUT MUST BE REVIEWED AND APPROVED BY THE PRODUCT MANUFACTURER TO BE CONSIDERED ACCURATE.
5. CONTRACTOR'S NOTE: FOR PRODUCT AND COMPANY INFORMATION VISIT [www.CADdetails.com/info](http://www.CADdetails.com/info) AND ENTER REFERENCE NUMBER 065-113.



## SENTINEL TWO-WIRE PEDESTAL ENCLOSURE CONTROLLER

PS1 STAINLESS STEEL ENCLOSURE