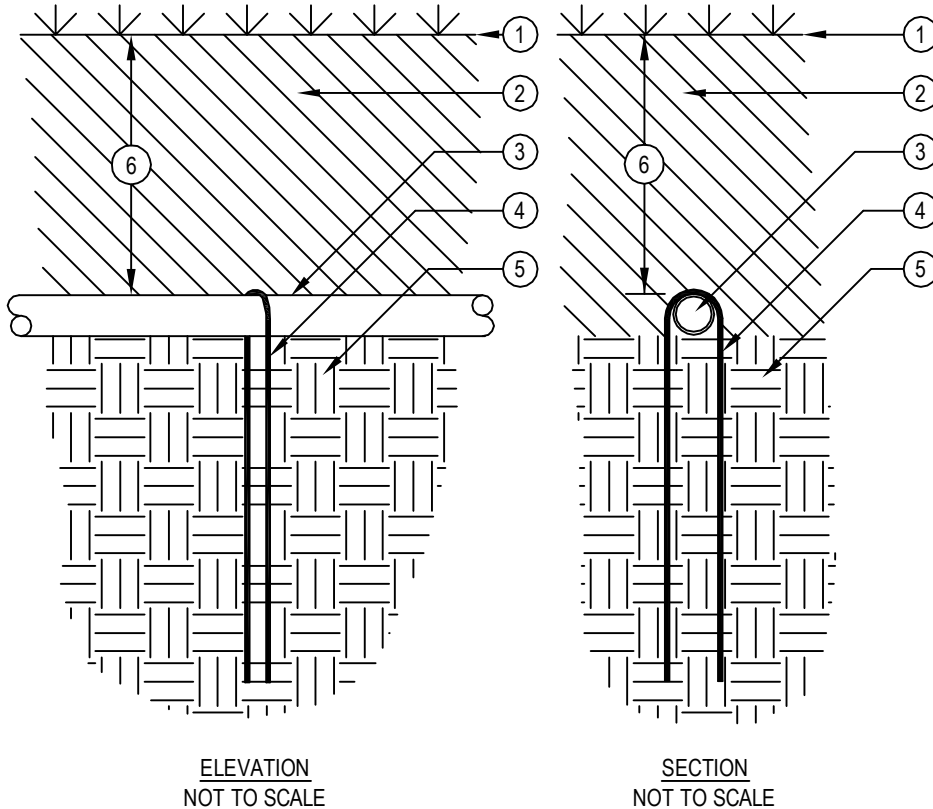




TORO-IRRIGATION DIVISION
5825 JASMINE STREET
RIVERSIDE, CA 92504
TOLL FREE: 1-877-345-8676
FAX: (951) 359-1870
crc@toro.com
www.toro.com



LEGEND:

- ① FINISH GRADE.
- ② BACKFILL MIX PER SPECIFICATIONS.
- ③ TORO DL2000 DRIPLINE (RGP-XXX-XX).
- ④ TORO DL2000 STEEL SOIL STAPLE (SS6-50).
- ⑤ NATIVE SOIL PER SPECIFICATIONS.
- ⑥ DEPTH OF TUBING PER SPECIFICATIONS (SEE TORO PUBLICATION #ALT111).

NOTES:

1. LOCATE STAPLES ALONG TUBING AT 4'-6" ON CENTER AND AT ALL FITTINGS (TEES, ELLS, ETC.)
2. INSTALLATION TO BE COMPLETED IN ACCORDANCE WITH MANUFACTURER'S SPECIFICATIONS.
3. DO NOT SCALE DRAWING.
4. THIS DRAWING IS INTENDED FOR USE BY ARCHITECTS, ENGINEERS, CONTRACTORS, CONSULTANTS AND DESIGN PROFESSIONALS FOR PLANNING PURPOSES ONLY. THIS DRAWING MAY NOT BE USED FOR CONSTRUCTION.
5. ALL INFORMATION CONTAINED HEREIN WAS CURRENT AT THE TIME OF DEVELOPMENT BUT MUST BE REVIEWED AND APPROVED BY THE PRODUCT MANUFACTURER TO BE CONSIDERED ACCURATE.
6. CONTRACTOR'S NOTE: FOR PRODUCT AND COMPANY INFORMATION VISIT www.CADdetails.com/info AND ENTER REFERENCE NUMBER 065-189.

