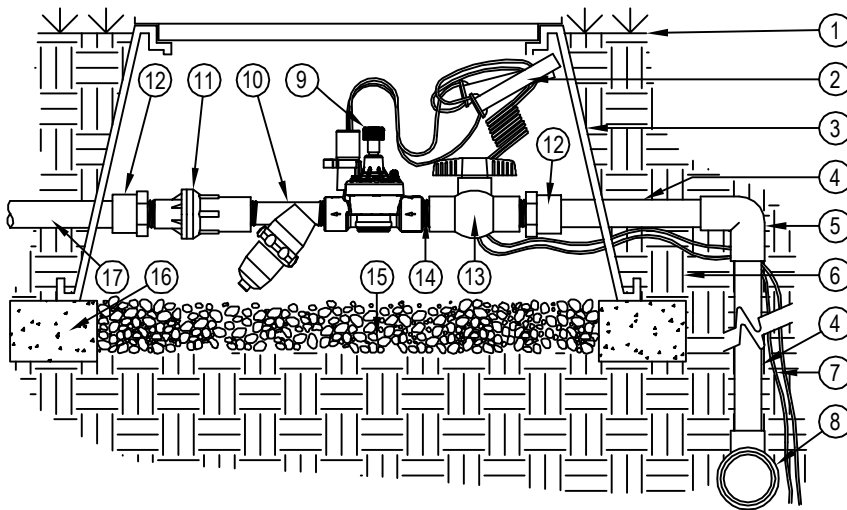




TORO-IRRIGATION DIVISION  
 5825 JASMINE STREET  
 RIVERSIDE, CA 92504  
 TOLL FREE: 1-877-345-8676  
 FAX: (951) 359-1870  
 crc@toro.com  
 www.toro.com

LEGEND:

- ① FINISH GRADE.
- ② CONTROL WIRES WITH 36" SERVICE COIL AND WATER PROOF WIRE CONNECTIONS, DBY OR EQUAL.
- ③ RECTANGULAR PLASTIC VALVE BOX. HEAT BRAND STATION NUMBER ON LID IN 2" HIGH CHARACTERS.
- ④ PVC MAINLINE PER SPECIFICATIONS (LENGTH AS REQUIRED).
- ⑤ SCH 40 PVC ELL (SxS).
- ⑥ NATIVE SOIL PER SPECIFICATIONS.
- ⑦ CONTROL WIRES TO CONTROLLER.
- ⑧ PVC MAINLINE FITTING.
- ⑨ TORO TPVF100 INLINE VALVE (\*).
- ⑩ TORO 150 MESH Y-FILTER (\*).
- ⑪ TORO 25 PSI LOW FLOW PRESSURE REGULATOR (\*).
- ⑫ SCH 40 PVC MALE ADAPTER.
- ⑬ SCH 40 PVC BALL VALVE (\*).
- ⑭ SCH 80 PVC CLOSE NIPPLE (\*).
- ⑮ PEA GRAVEL SUMP, MINIMUM 6" DEEP.
- ⑯ BRICK SUPPORTS (4 COMMON BRICKS REQUIRED).
- ⑰ LATERAL LINE TO DRIP SYSTEM.  
 (\*) PARTS IN DRIP ZONE KIT.

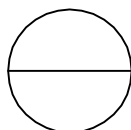


ELEVATION/SECTION  
 NOT TO SCALE

MIN. FLOW RATE - 2.0 GPM  
 MAX. FLOW RATE - 20.0 GPM

NOTES:

1. INSTALLATION TO BE COMPLETED IN ACCORDANCE WITH MANUFACTURER'S SPECIFICATIONS.
2. DO NOT SCALE DRAWING.
3. THIS DRAWING IS INTENDED FOR USE BY ARCHITECTS, ENGINEERS, CONTRACTORS, CONSULTANTS AND DESIGN PROFESSIONALS FOR PLANNING PURPOSES ONLY. THIS DRAWING MAY NOT BE USED FOR CONSTRUCTION.
4. ALL INFORMATION CONTAINED HEREIN WAS CURRENT AT THE TIME OF DEVELOPMENT BUT MUST BE REVIEWED AND APPROVED BY THE PRODUCT MANUFACTURER TO BE CONSIDERED ACCURATE.
5. CONTRACTOR'S NOTE: FOR PRODUCT AND COMPANY INFORMATION VISIT [www.CADdetails.com/info](http://www.CADdetails.com/info) AND ENTER REFERENCE NUMBER 065-190d.



**TORO DRIP ZONE KIT**

DZK-TPV-1-MF