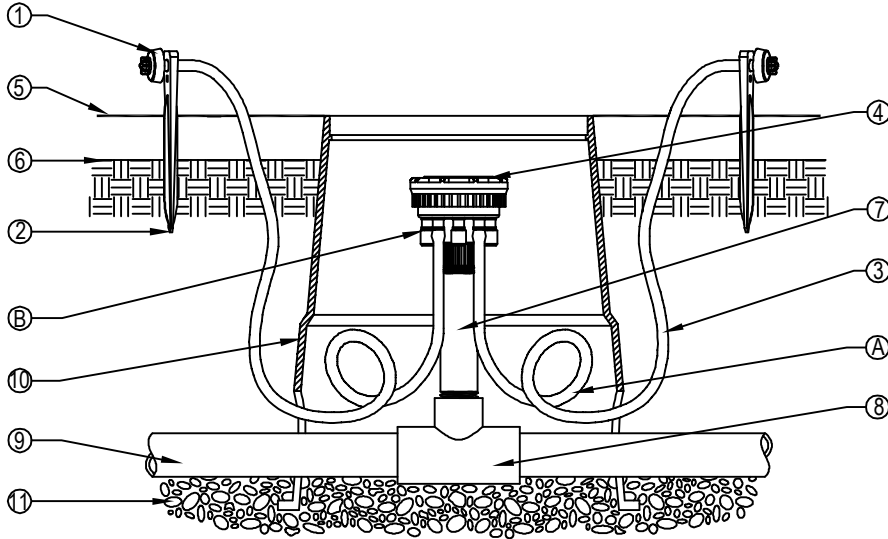




TORO-IRRIGATION DIVISION
 5825 JASMINE STREET
 RIVERSIDE, CA 92504
 TOLL FREE: 1-877-345-8676
 FAX: (951) 359-1870
 crc@toro.com
 www.toro.com



SECTION/ELEVATION

NOTES:

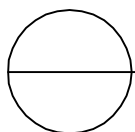
- Ⓐ COIL ADDITIONAL 6" OF 1/4" TUBING IN VALVE BOX TO FACILITATE MAINTENANCE.
- Ⓑ CAP OFF ALL UNUSED CONNECTORS.

LEGEND:

- ① NGE PRESSURE COMPENSATING EMITTER TORO MODEL: T-DPCXX (XX DENOTES FLOWRATE*) WITH COLOR-CODED, SNAP-ON DUST CAP
- ② 1/4" TUBING LOCATOR STAKE TORO MODEL: T-IPS0104.
- ③ 1/4" BLUE STRIPE DRIP HOSE TORO MODEL: T-EHW437 (LENGTH AS REQUIRED)
- ④ 9-OUTLET DRIP MANIFOLD TORO MODEL: T-PR25-9 PRESSURE REGULATING (25 PSI)
- ⑤ TOP OF MULCH AND/OR DECORATIVE BARK.
- ⑥ FINISH GRADE.
- ⑦ PVC SCH 80 1/2" NIPPLE (LENGTH AS REQUIRED).
- ⑧ PVC SCH 40 TEE OR ELL.
- ⑨ PVC LATERAL PIPE.
- ⑩ 6" ROUND VALVE BOX.
- ⑪ 3" MINIMUM DEPTH OF 3/4" WASHED GRAVEL.

NOTES:

1. LOCATE STAPLES ALONG TUBING AT 4'-6" ON CENTER AND AT ALL FITTINGS (TEES, ELLS, ETC.)
2. INSTALLATION TO BE COMPLETED IN ACCORDANCE WITH MANUFACTURER'S SPECIFICATIONS.
3. DO NOT SCALE DRAWING.
4. THIS DRAWING IS INTENDED FOR USE BY ARCHITECTS, ENGINEERS, CONTRACTORS, CONSULTANTS AND DESIGN PROFESSIONALS FOR PLANNING PURPOSES ONLY. THIS DRAWING MAY NOT BE USED FOR CONSTRUCTION.
5. ALL INFORMATION CONTAINED HEREIN WAS CURRENT AT THE TIME OF DEVELOPMENT BUT MUST BE REVIEWED AND APPROVED BY THE PRODUCT MANUFACTURER TO BE CONSIDERED ACCURATE.
6. CONTRACTOR'S NOTE: FOR PRODUCT AND COMPANY INFORMATION VISIT www.CADdetails.com/info AND ENTER REFERENCE NUMBER 065-191a.



LANDSCAPE DRIP

NGE® EMITTERS - 9-OUTLET DRIP MANIFOLD