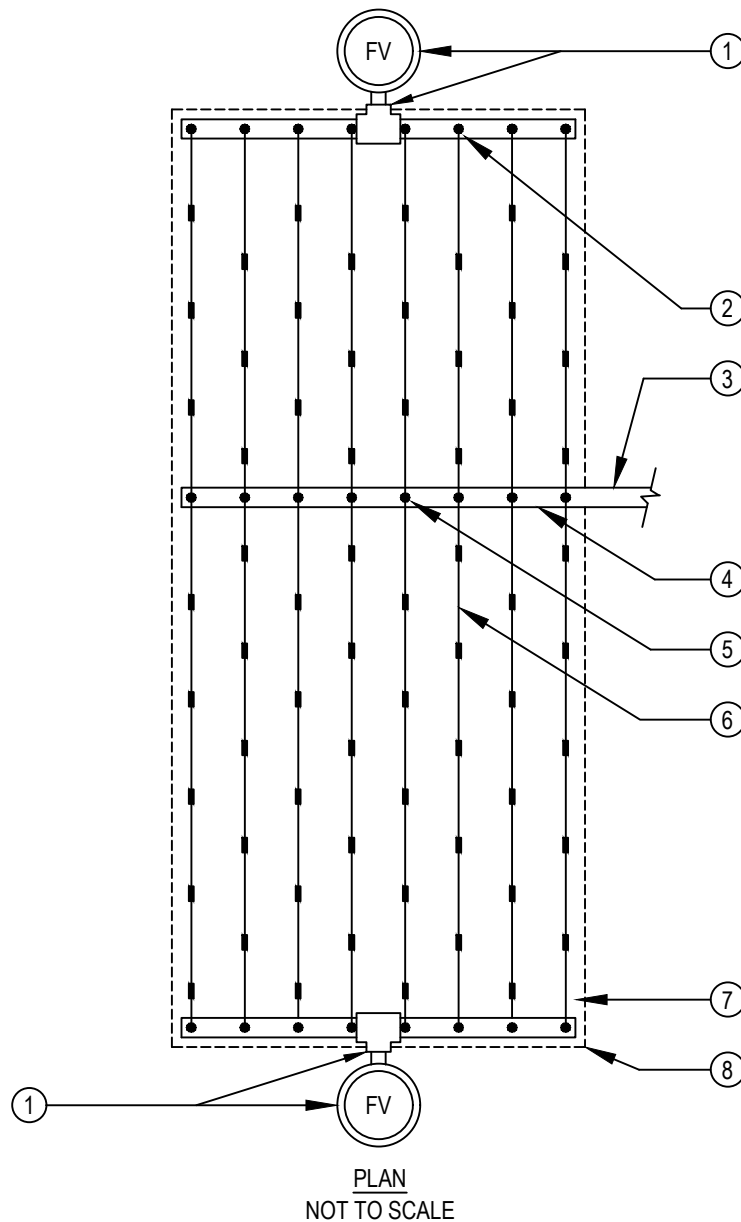




TORO-IRRIGATION DIVISION  
5825 JASMINE STREET  
RIVERSIDE, CA 92504  
TOLL FREE: 1-877-345-8676  
FAX: (951) 359-1870  
crc@toro.com  
www.toro.com

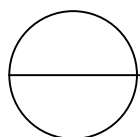


LEGEND:

- ① AUTOMATIC FLUSH VALVE (T-FCH-H-FIPT) PLUMBED TO PVC FLUSH MANIFOLD AT LOW POINT.
- ② TORO DRIP IN® 17MM DRIPLINE MANIFOLD-TO-ELBOW CONNECTION (TYP).
- ③ PVC LATERAL LINE FROM DRIP ZONE KIT.
- ④ PVC SUPPLY MANIFOLD.
- ⑤ TORO DRIP IN® 17MM DRIPLINE MANIFOLD-TO-TEE CONNECTION.
- ⑥ TORO DRIP IN® 17MM DRIPLINE LATERAL (PCB-XXX-XXX).
- ⑦ PERIMETER LATERALS 2" TO 4" FROM EDGE.
- ⑧ AREA PERIMETER.

NOTES:

- 1. THE TOTAL LENGTH OF ALL INTERCONNECTED DRIP LINE SHALL NOT EXCEED THE MAXIMUM RUN LENGTH. SEE TORO SUBSURFACE IRRIGATION DESIGN GUIDE (FORM #ALT111).
- 2. INSTALLATION TO BE COMPLETED IN ACCORDANCE WITH MANUFACTURER'S SPECIFICATIONS.
- 3. DO NOT SCALE DRAWING.
- 4. THIS DRAWING IS INTENDED FOR USE BY ARCHITECTS, ENGINEERS, CONTRACTORS, CONSULTANTS AND DESIGN PROFESSIONALS FOR PLANNING PURPOSES ONLY. THIS DRAWING MAY NOT BE USED FOR CONSTRUCTION.
- 5. ALL INFORMATION CONTAINED HEREIN WAS CURRENT AT THE TIME OF DEVELOPMENT BUT MUST BE REVIEWED AND APPROVED BY THE PRODUCT MANUFACTURER TO BE CONSIDERED ACCURATE.



DRIP IN® 17MM DRIPLINE

CENTER-FEED LAYOUT