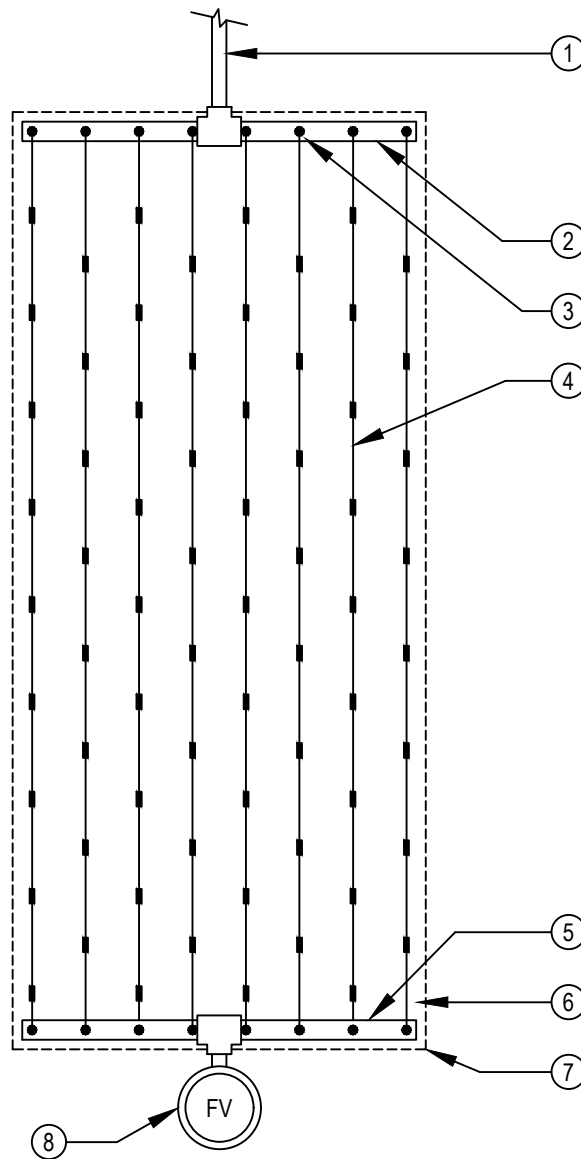




TORO-IRRIGATION DIVISION
5825 JASMINE STREET
RIVERSIDE, CA 92504
TOLL FREE: 1-877-345-8676
FAX: (951) 359-1870
crc@toro.com
www.toro.com



LEGEND:

- ① PVC LATERAL LINE FROM DRIP ZONE KIT.
- ② PVC SUPPLY MANIFOLD.
- ③ TORO DRIP IN® 17MM DRIPLINE MANIFOLD-TO-ELBOW CONNECTION (TYP).
- ④ TORO DRIP IN® 17MM DRIPLINE DRIPLINE LATERAL (PCB-XXX-XXX).
- ⑤ PVC FLUSH MANIFOLD.
- ⑥ PERIMETER LATERALS 2" TO 4" FROM EDGE.
- ⑦ AREA PERIMETER.
- ⑧ AUTOMATIC FLUSH VALVE (T-FCH-H-FIPT) PLUMBED TO FLUSH MANIFOLD AT LOW POINT.

PLAN
NOT TO SCALE

NOTES:

1. THE TOTAL LENGTH OF ALL INTERCONNECTED DRIP LINE SHALL NOT EXCEED THE MAXIMUM RUN LENGTH. SEE TORO SUBSURFACE IRRIGATION DESIGN GUIDE (FORM #ALT111).
2. INSTALLATION TO BE COMPLETED IN ACCORDANCE WITH MANUFACTURER'S SPECIFICATIONS.
3. DO NOT SCALE DRAWING.
4. THIS DRAWING IS INTENDED FOR USE BY ARCHITECTS, ENGINEERS, CONTRACTORS, CONSULTANTS AND DESIGN PROFESSIONALS FOR PLANNING PURPOSES ONLY. THIS DRAWING MAY NOT BE USED FOR CONSTRUCTION.
5. ALL INFORMATION CONTAINED HEREIN WAS CURRENT AT THE TIME OF DEVELOPMENT BUT MUST BE REVIEWED AND APPROVED BY THE PRODUCT MANUFACTURER TO BE CONSIDERED ACCURATE.



DRIP IN® 17MM DRIPLINE

END-FEED LAYOUT