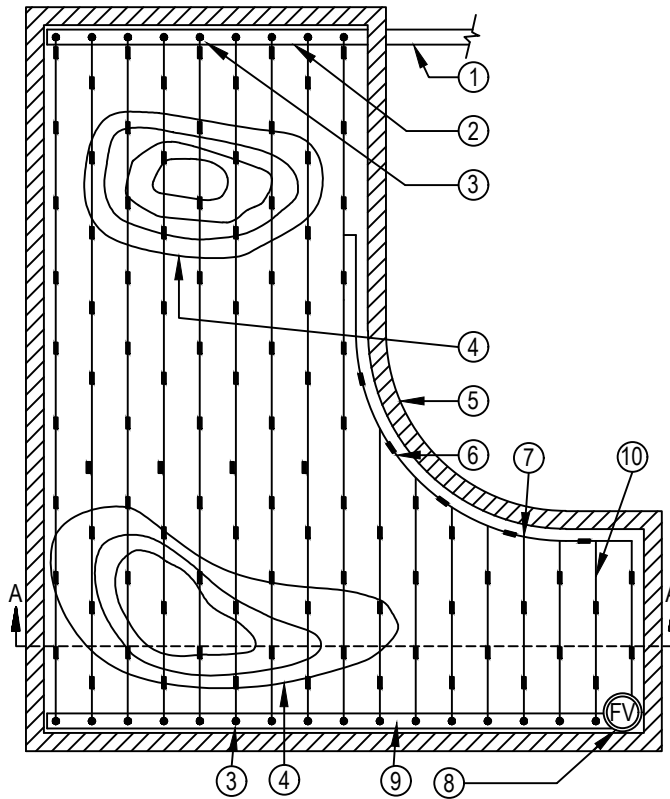
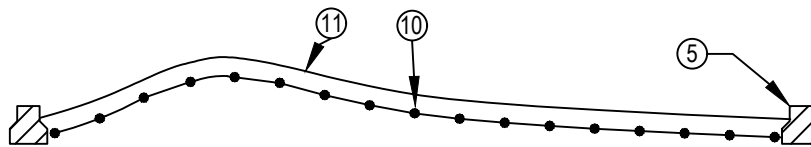




TORO-IRRIGATION DIVISION  
5825 JASMINE STREET  
RIVERSIDE, CA 92504  
TOLL FREE: 1-877-345-8676  
FAX: (951) 359-1870  
crc@toro.com  
www.toro.com



PLAN  
NOT TO SCALE



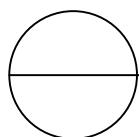
SECTION A-A  
NOT TO SCALE

LEGEND:

- ① PVC LATERAL LINE FROM DRIP ZONE KIT.
- ② PVC SUPPLY MANIFOLD.
- ③ TORO DRIP IN® 17MM DRIPLINE MANIFOLD-TO-ELBOW CONNECTION (TYP).
- ④ BERM (TYP).
- ⑤ EDGE OF PLANTER.
- ⑥ PERIMETER LATERALS 2" TO 4" FROM EDGE.
- ⑦ TORO TRI-LOC TEE (TL-T) OR I560-T INSERT TEE
- ⑧ TORO AUTOMATIC FLUSH VALVE (T-FCH-H-FIPT) PLUMBED TO FLUSH MANIFOLD AT LOW POINT.
- ⑨ PVC FLUSH MANIFOLD.
- ⑩ TORO DRIP IN® 17MM DRIPLINE LATERAL (PCB-XXX-XXX).
- ⑪ FINISHED GRADE.

NOTES:

1. THE TOTAL LENGTH OF ALL INTERCONNECTED DRIP LINE SHALL NOT EXCEED THE MAXIMUM RUN LENGTH. SEE TORO SUBSURFACE IRRIGATION DESIGN GUIDE (FORM #ALT111).
2. INSTALLATION TO BE COMPLETED IN ACCORDANCE WITH MANUFACTURER'S SPECIFICATIONS.
3. DO NOT SCALE DRAWING.
4. THIS DRAWING IS INTENDED FOR USE BY ARCHITECTS, ENGINEERS, CONTRACTORS, CONSULTANTS AND DESIGN PROFESSIONALS FOR PLANNING PURPOSES ONLY. THIS DRAWING MAY NOT BE USED FOR CONSTRUCTION.
5. ALL INFORMATION CONTAINED HEREIN WAS CURRENT AT THE TIME OF DEVELOPMENT BUT MUST BE REVIEWED AND APPROVED BY THE PRODUCT MANUFACTURER TO BE CONSIDERED ACCURATE.



DRIP IN® 17MM DRIPLINE

MOUND LAYOUT