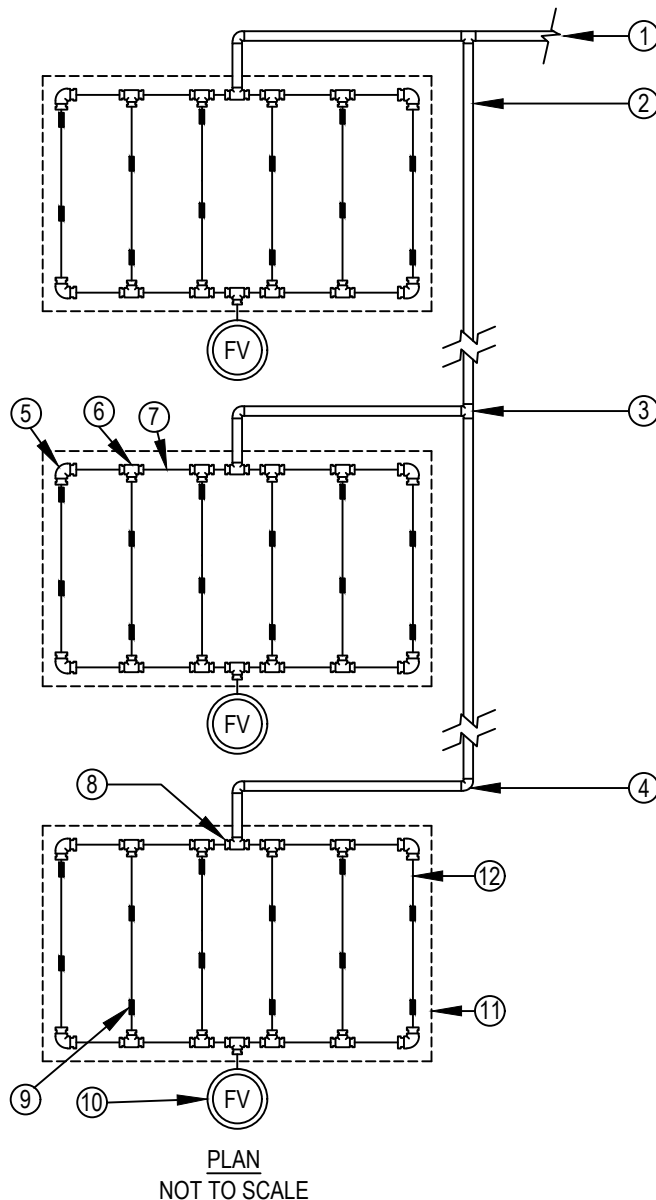




TORO-IRRIGATION DIVISION
5825 JASMINE STREET
RIVERSIDE, CA 92504
TOLL FREE: 1-877-345-8676
FAX: (951) 359-1870
crc@toro.com
www.toro.com

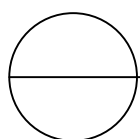


LEGEND:

- ① PVC LATERAL LINE FROM DRIP ZONE KIT.
- ② PVC SUPPLY MANIFOLD.
- ③ PVC TEE (SxSxS).
- ④ PVC ELBOW (SxS).
- ⑤ TORO TRI-LOC ELBOW (TL-E) OR I560-E INSERT ELBOW.
- ⑥ TORO TRI-LOC TEE (TL-T) OR I560-T INSERT TEE.
- ⑦ TORO BLUE STRIPE POLY TUBING (T-EHX1554-XXX) AT SUPPLY AND FLUSH END OF EACH ISLAND.
- ⑧ TORO TRI-LOC TEE X 1/2" MPT ADAPTER (TL-T-M50) OR I560-T-M50 INSERT TEE X 1/2" MPT.
- ⑨ TORO DRIP IN® 17MM DRIPLINE LATERAL (PCB-XXX-XXX).
- ⑩ TORO DRIP IN® 17MM DRIPLINE AUTOMATIC FLUSH VALVE (T-FCH-H-FIPT) PLUMBED TO TUBING AT LOW POINT.
- ⑪ ISLAND PERIMETER.
- ⑫ PERIMETER LATERALS 2" TO 4" FROM EDGE.

NOTES:

1. THE TOTAL LENGTH OF ALL INTERCONNECTED DRIP LINE SHALL NOT EXCEED THE MAXIMUM RUN LENGTH. SEE TORO SUBSURFACE IRRIGATION DESIGN GUIDE (FORM #ALT111).
2. INSTALLATION TO BE COMPLETED IN ACCORDANCE WITH MANUFACTURER'S SPECIFICATIONS.
3. DO NOT SCALE DRAWING.
4. THIS DRAWING IS INTENDED FOR USE BY ARCHITECTS, ENGINEERS, CONTRACTORS, CONSULTANTS AND DESIGN PROFESSIONALS FOR PLANNING PURPOSES ONLY. THIS DRAWING MAY NOT BE USED FOR CONSTRUCTION.
5. ALL INFORMATION CONTAINED HEREIN WAS CURRENT AT THE TIME OF DEVELOPMENT BUT MUST BE REVIEWED AND APPROVED BY THE PRODUCT MANUFACTURER TO BE CONSIDERED ACCURATE.



DRIP IN® 17MM DRIPLINE

ISLAND LAYOUT A