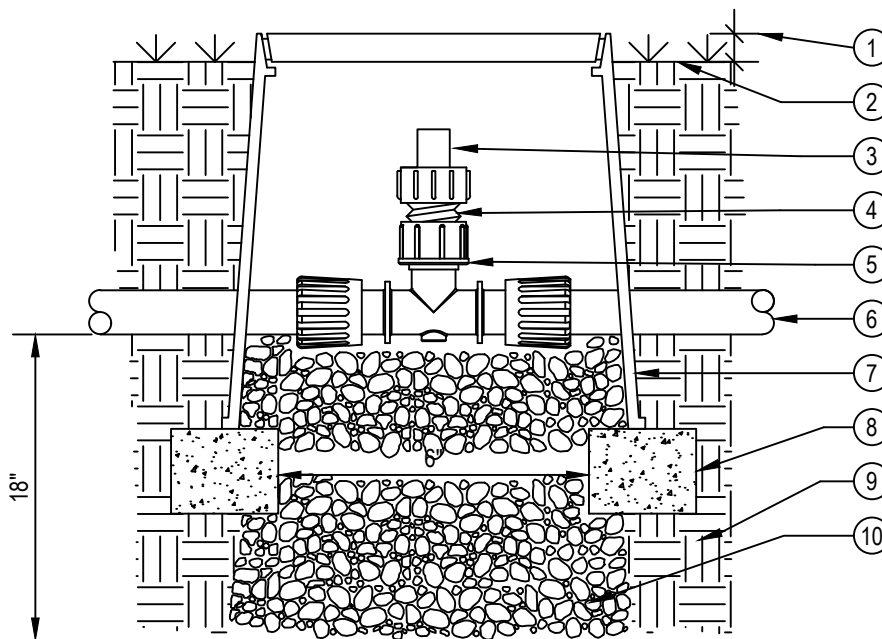




TORO-IRRIGATION DIVISION  
5825 JASMINE STREET  
RIVERSIDE, CA 92504  
TOLL FREE: 1-877-345-8676  
FAX: (951) 359-1870  
crc@toro.com  
www.toro.com



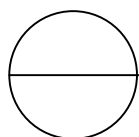
SECTION/ELEVATION  
NOT TO SCALE

LEGEND:

- ① 1" ABOVE FINISH GRADE.
- ② FINISH GRADE.
- ③ TORO FLUSH VALVE (T-FCH-H-FIPT).
- ④ PVC SCH 40 REDUCING NIPPLE, 3/4"-1/2" (TxT).
- ⑤ TORO TRI-LOC X 1/2" FPT TEE (TL-T-F50).
- ⑥ TORO DRIP IN® 17MM DRIPLINE TUBING (PCB-XXX-XXX) OR TORO BLANK POLY TUBING (T-EHX1554-XXX).
- ⑦ 6" ROUND PLASTIC VALVE BOX . HEAT BRAND "FV" ON LID IN 1" HIGH CHARACTERS.
- ⑧ BRICK SUPPORTS (2 COMMON BRICKS REQUIRED).
- ⑨ NATIVE SOIL PER SPECIFICATIONS.
- ⑩ PEA GRAVEL SUMP (6" x 18").

NOTES:

1. USE ONE FLUSH VALVE FOR EVERY 7 GPM PER ZONE. LOCATE AT LOW POINTS. FLUSH RATE IS 0.8 GPM. FLUSH PRESSURE IS 2 PSI. REFER TO TORO PUBLICATION #ALT111 FOR SPECIFICATIONS.
2. INSTALLATION TO BE COMPLETED IN ACCORDANCE WITH MANUFACTURER'S SPECIFICATIONS.
3. DO NOT SCALE DRAWING.
4. THIS DRAWING IS INTENDED FOR USE BY ARCHITECTS, ENGINEERS, CONTRACTORS, CONSULTANTS AND DESIGN PROFESSIONALS FOR PLANNING PURPOSES ONLY. THIS DRAWING MAY NOT BE USED FOR CONSTRUCTION.
5. ALL INFORMATION CONTAINED HEREIN WAS CURRENT AT THE TIME OF DEVELOPMENT BUT MUST BE REVIEWED AND APPROVED BY THE PRODUCT MANUFACTURER TO BE CONSIDERED ACCURATE.



**DRIP IN® 17MM DRIPLINE**

FLUSH VALVE ON TUBING