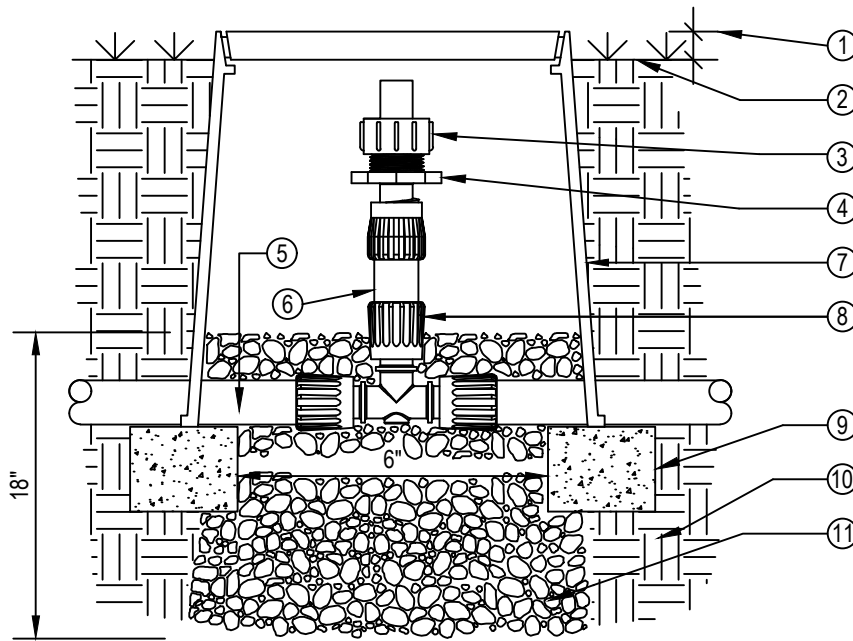




TORO-IRRIGATION DIVISION
5825 JASMINE STREET
RIVERSIDE, CA 92504
TOLL FREE: 1-877-345-8676
FAX: (951) 359-1870
crc@toro.com
www.toro.com

LEGEND:

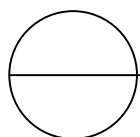
- ① 1" ABOVE FINISH GRADE.
- ② FINISH GRADE.
- ③ TORO FLUSH VALVE (T-FCH-H-FHT).
- ④ TORO TRI-LOC X 3/4" MPT ADAPTER (TL-M75) OR I560-M75 INSERT X 3/4" MPT ADAPTER.
- ⑤ TORO BLUE STRIPE POLY TUBING (T-EHX1554-XXX).
- ⑥ TORO DRIP IN® 17MM DRIPLINE TUBING (PCB-XXX-XXX) OR TORO BLUE STRIPE POLY TUBING (T-EHX1554-XXX).
- ⑦ 6" ROUND PLASTIC VALVE BOX . HEAT BRAND "FV" ON LID IN 1" HIGH CHARACTERS.
- ⑧ TORO TRI-LOC TEE (TL-T) OR I560-T INSERT TEE.
- ⑨ BRICK SUPPORTS (2 COMMON BRICK REQUIRED).
- ⑩ NATIVE SOIL PER SPECIFICATIONS.
- ⑪ PEA GRAVEL SUMP (6" x 18").



SECTION/ELEVATION
NOT TO SCALE

NOTES:

- 1. USE ONE FLUSH VALVE FOR EVERY 7 GPM PER ZONE. LOCATE AT LOW POINTS. FLUSH RATE IS 0.8 GPM. FLUSH PRESSURE IS 2 PSI. REFER TO TORO PUBLICATION #ALT111 FOR SPECIFICATIONS.
- 2. INSTALLATION TO BE COMPLETED IN ACCORDANCE WITH MANUFACTURER'S SPECIFICATIONS.
- 3. DO NOT SCALE DRAWING.
- 4. THIS DRAWING IS INTENDED FOR USE BY ARCHITECTS, ENGINEERS, CONTRACTORS, CONSULTANTS AND DESIGN PROFESSIONALS FOR PLANNING PURPOSES ONLY. THIS DRAWING MAY NOT BE USED FOR CONSTRUCTION.
- 5. ALL INFORMATION CONTAINED HEREIN WAS CURRENT AT THE TIME OF DEVELOPMENT BUT MUST BE REVIEWED AND APPROVED BY THE PRODUCT MANUFACTURER TO BE CONSIDERED ACCURATE.



DRIP IN® 17MM DRIPLINE

FLUSH VALVE ON POLY-TEE