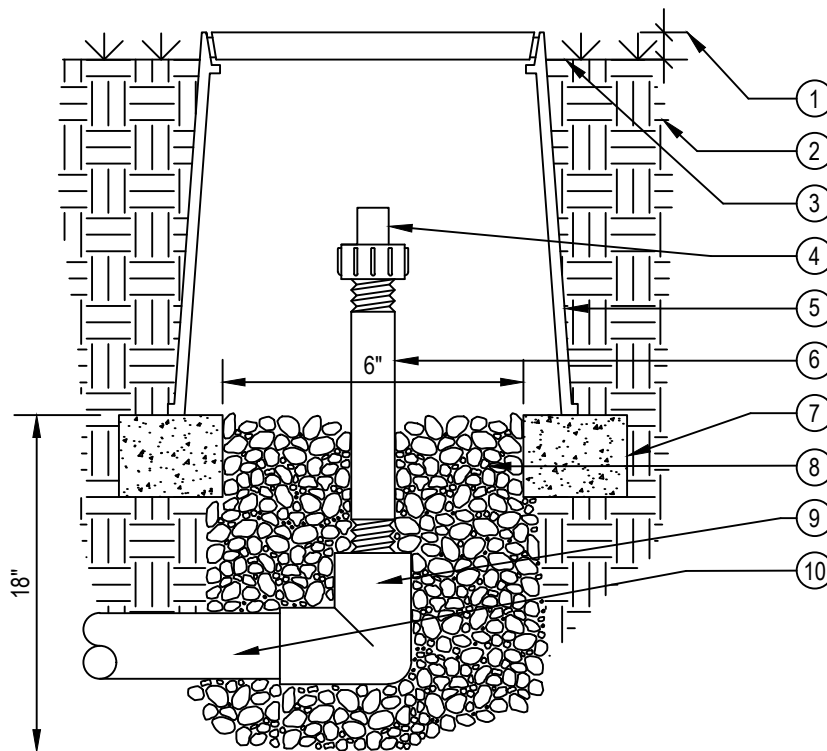




TORO-IRRIGATION DIVISION
5825 JASMINE STREET
RIVERSIDE, CA 92504
TOLL FREE: 1-877-345-8676
FAX: (951) 359-1870
crc@toro.com
www.toro.com



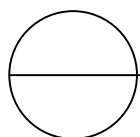
SECTION/ELEVATION
NOT TO SCALE

LEGEND:

- ① 1" ABOVE FINISH GRADE.
- ② NATIVE SOIL PER SPECIFICATIONS.
- ③ FINISH GRADE.
- ④ TORO FLUSH VALVE (T-FCH-H-FIPT).
- ⑤ 6" ROUND PLASTIC VALVE BOX . HEAT BRAND "FV" ON LID IN 1" HIGH CHARACTERS.
- ⑥ 3/4" SCH 80 PVC NIPPLE (LENGTH AS REQUIRED).
- ⑦ BRICK SUPPORTS (2 COMMON BRICKS REQUIRED).
- ⑧ PEA GRAVEL SUMP (6" x 18").
- ⑨ PVC ELL (SxT) WITH 3/4" THREADED OUTLET.
- ⑩ PVC PIPING.

NOTES:

- 1. USE ONE FLUSH VALVE FOR EVERY 7 GPM PER ZONE. LOCATE AT LOW POINTS. FLUSH RATE IS 0.8 GPM. FLUSH PRESSURE IS 2 PSI. REFER TO TORO PUBLICATION #ALT111 FOR SPECIFICATIONS.
- 2. INSTALLATION TO BE COMPLETED IN ACCORDANCE WITH MANUFACTURER'S SPECIFICATIONS.
- 3. DO NOT SCALE DRAWING.
- 4. THIS DRAWING IS INTENDED FOR USE BY ARCHITECTS, ENGINEERS, CONTRACTORS, CONSULTANTS AND DESIGN PROFESSIONALS FOR PLANNING PURPOSES ONLY. THIS DRAWING MAY NOT BE USED FOR CONSTRUCTION.
- 5. ALL INFORMATION CONTAINED HEREIN WAS CURRENT AT THE TIME OF DEVELOPMENT BUT MUST BE REVIEWED AND APPROVED BY THE PRODUCT MANUFACTURER TO BE CONSIDERED ACCURATE.



DRIP IN[®] 17MM DRIPLINE

FLUSH VALVE ON PVC-ELBOW