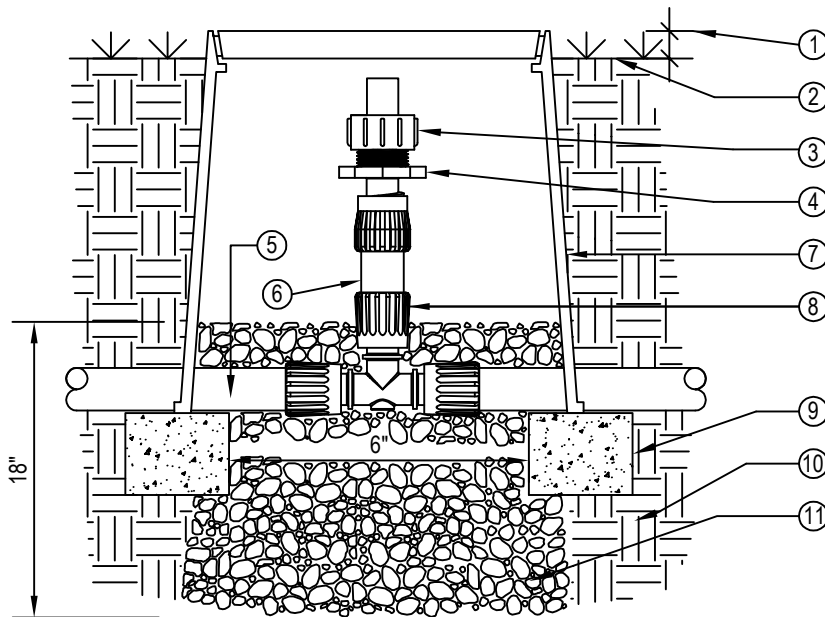




TORO-IRRIGATION DIVISION
5825 JASMINE STREET
RIVERSIDE, CA 92504
TOLL FREE: 1-877-345-8676
FAX: (951) 359-1870
crc@toro.com
www.toro.com



SECTION/ELEVATION
NOT TO SCALE

LEGEND:

① 1" ABOVE FINISH GRADE.

② FINISH GRADE.

TORO FLUSH VALVE
③ (T-FCH-H-FHT).

④ TORO TRI-LOC X 3/4" MPT
ADAPTER (TL-M75)

⑤ TORO BLUE STRIPE POLY
TUBING (T-EHD1645-XXX).

⑥ TORO DL2000 TUBING
(RGP-XX-XXX) OR TORO BLUE
STRIPE POLY TUBING
(T-EHD1645-XXX).

⑦ 6" ROUND PLASTIC VALVE BOX .
HEAT BRAND "FV" ON LID IN 1"
HIGH CHARACTERS.

⑧ TORO TRI-LOC TEE (TL-T).

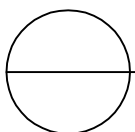
⑨ BRICK SUPPORTS
(2 COMMON BRICK REQUIRED).

⑩ NATIVE SOIL PER
SPECIFICATIONS.

⑪ PEA GRAVEL SUMP (6" x 18").

NOTES:

1. USE ONE FLUSH VALVE FOR EVERY 7 GPM PER ZONE. LOCATE AT LOW POINTS. FLUSH RATE IS 0.8 GPM. FLUSH PRESSURE IS 2 PSI. REFER TO TORO PUBLICATION #ALT111 FOR SPECIFICATIONS.
2. INSTALLATION TO BE COMPLETED IN ACCORDANCE WITH MANUFACTURER'S SPECIFICATIONS.
3. DO NOT SCALE DRAWING.
4. THIS DRAWING IS INTENDED FOR USE BY ARCHITECTS, ENGINEERS, CONTRACTORS, CONSULTANTS AND DESIGN PROFESSIONALS FOR PLANNING PURPOSES ONLY. THIS DRAWING MAY NOT BE USED FOR CONSTRUCTION.
5. ALL INFORMATION CONTAINED HEREIN WAS CURRENT AT THE TIME OF DEVELOPMENT BUT MUST BE REVIEWED AND APPROVED BY THE PRODUCT MANUFACTURER TO BE CONSIDERED ACCURATE.
6. CONTRACTOR'S NOTE: FOR PRODUCT AND COMPANY INFORMATION VISIT www.CADdetails.com/info AND ENTER REFERENCE NUMBER 065-188u.



DL2000®

FLUSH VALVE ON POLY-TEE