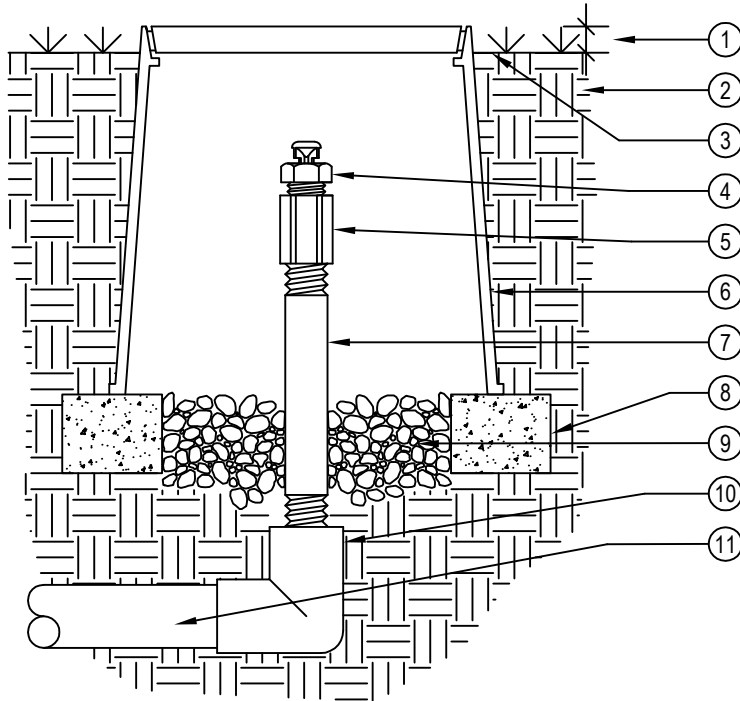




TORO-IRRIGATION DIVISION
5825 JASMINE STREET
RIVERSIDE, CA 92504
TOLL FREE: 1-877-345-8676
FAX: (951) 359-1870
crc@toro.com
www.toro.com



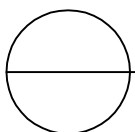
SECTION/ELEVATION
NOT TO SCALE

LEGEND:

- ① 1" ABOVE FINISH GRADE.
- ② NATIVE SOIL PER SPECIFICATIONS.
- ③ FINISH GRADE.
- ④ TORO AIR/VACUUM RELIEF VALVE (T-YD-500-34).
- ⑤ 1/2" PVC COUPLING (TxT).
- ⑥ 6" ROUND PLASTIC VALVE BOX . HEAT BRAND "AR" ON LID IN 1" HIGH CHARACTERS.
- ⑦ 1/2" SCH 80 PVC NIPPLE (LENGTH AS REQUIRED).
- ⑧ BRICK SUPPORTS (2 COMMON BRICKS REQUIRED).
- ⑨ PEA GRAVEL SUMP (6" DEEP).
- ⑩ PVC ELL (SxT) WITH 1/2" THREADED OUTLET.
- ⑪ PVC PIPING.

NOTES:

- 1. USE ONE AIR/RELIEF VALVE FOR EVERY 7 GPM PER ZONE. LOCATE AT HIGH POINTS. REFER TO TORO PUBLICATION #ALT111 FOR SPECIFICATIONS.
- 2. INSTALLATION TO BE COMPLETED IN ACCORDANCE WITH MANUFACTURER'S SPECIFICATIONS.
- 3. DO NOT SCALE DRAWING.
- 4. THIS DRAWING IS INTENDED FOR USE BY ARCHITECTS, ENGINEERS, CONTRACTORS, CONSULTANTS AND DESIGN PROFESSIONALS FOR PLANNING PURPOSES ONLY. THIS DRAWING MAY NOT BE USED FOR CONSTRUCTION.
- 5. ALL INFORMATION CONTAINED HEREIN WAS CURRENT AT THE TIME OF DEVELOPMENT BUT MUST BE REVIEWED AND APPROVED BY THE PRODUCT MANUFACTURER TO BE CONSIDERED ACCURATE.
- 6. CONTRACTOR'S NOTE: FOR PRODUCT AND COMPANY INFORMATION VISIT www.CADdetails.com/info AND ENTER REFERENCE NUMBER 065-188r.



DL2000®

AIR/VACUUM RELIEF VALVE ON PVC ELBOW