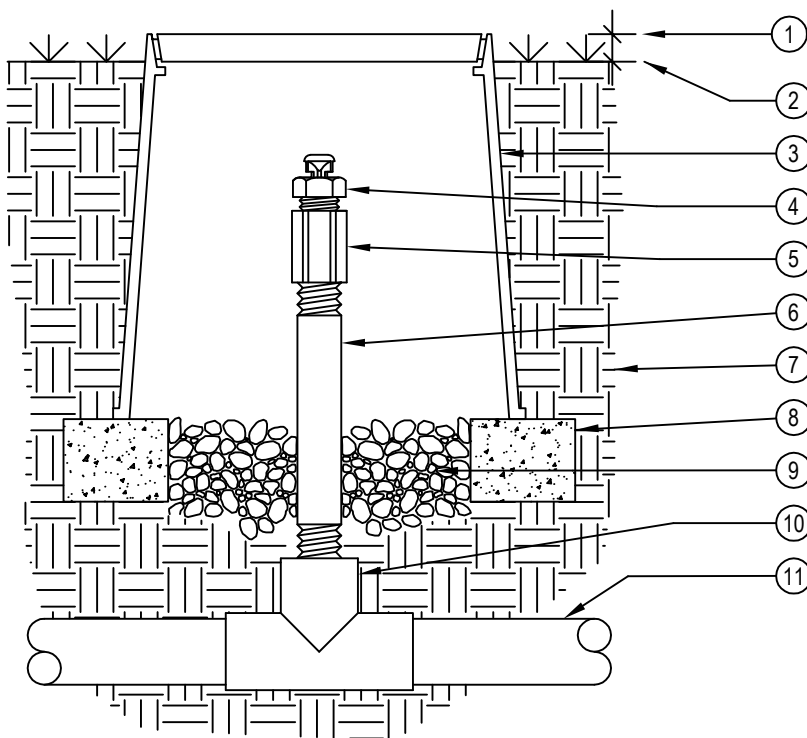




TORO-IRRIGATION DIVISION
5825 JASMINE STREET
RIVERSIDE, CA 92504
TOLL FREE: 1-877-345-8676
FAX: (951) 359-1870
crc@toro.com
www.toro.com



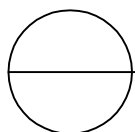
SECTION/ELEVATION
NOT TO SCALE

LEGEND:

- ① 1" ABOVE FINISH GRADE.
- ② FINISH GRADE.
- ③ 6" ROUND PLASTIC VALVE BOX. HEAT BRAND "AR" ON LID IN 1" HIGH CHARACTERS.
- ④ TORO AIR/VACUUM RELIEF VALVE (T-YD-500-34).
- ⑤ 1/2" FPT X 1/2" FPT COUPLING.
- ⑥ 3/4" SCH 80 PVC NIPPLE (LENGTH AS REQUIRED)
- ⑦ NATIVE SOIL PER SPECIFICATIONS.
- ⑧ BRICK SUPPORTS (2 COMMON BRICKS REQUIRED).
- ⑨ PEA GRAVEL SUMP (6" X 8").
- ⑩ PVC TEE (SxSxT) WITH 3/4" THREADED OUTLET.
- ⑪ PVC PIPING.

NOTES:

1. USE ONE AIR/RELIEF VALVE FOR EVERY 7 GPM PER ZONE. LOCATE AT HIGH POINTS. REFER TO TORO PUBLICATION #ALT111 FOR SPECIFICATIONS.
2. INSTALLATION TO BE COMPLETED IN ACCORDANCE WITH MANUFACTURER'S SPECIFICATIONS.
3. DO NOT SCALE DRAWING.
4. THIS DRAWING IS INTENDED FOR USE BY ARCHITECTS, ENGINEERS, CONTRACTORS, CONSULTANTS AND DESIGN PROFESSIONALS FOR PLANNING PURPOSES ONLY. THIS DRAWING MAY NOT BE USED FOR CONSTRUCTION.
5. ALL INFORMATION CONTAINED HEREIN WAS CURRENT AT THE TIME OF DEVELOPMENT BUT MUST BE REVIEWED AND APPROVED BY THE PRODUCT MANUFACTURER TO BE CONSIDERED ACCURATE.
6. CONTRACTOR'S NOTE: FOR PRODUCT AND COMPANY INFORMATION VISIT www.CADdetails.com/info AND ENTER REFERENCE NUMBER 065-188q.



DL2000®

AIR/VACUUM RELIEF VALVE ON PVC TEE